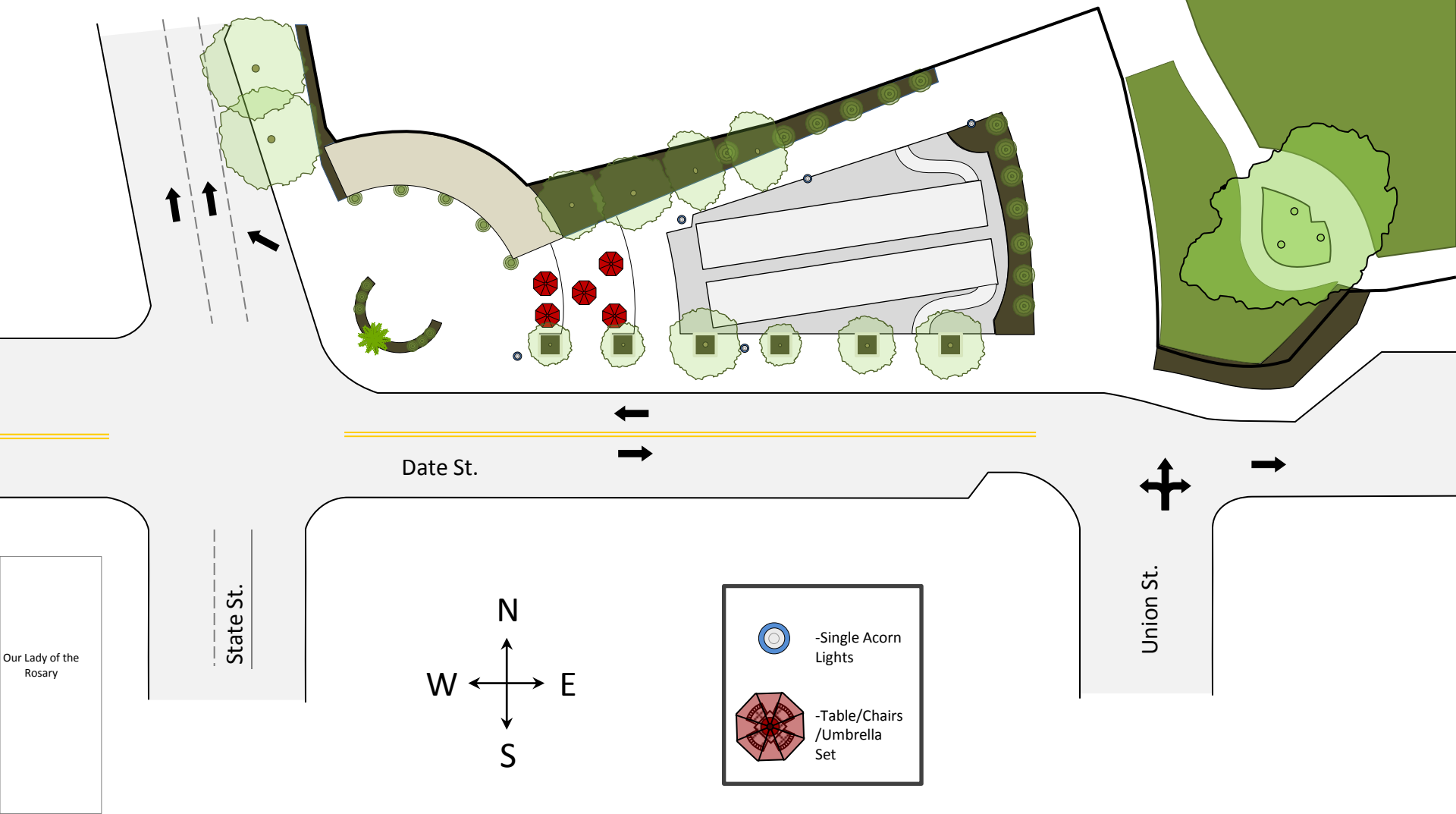
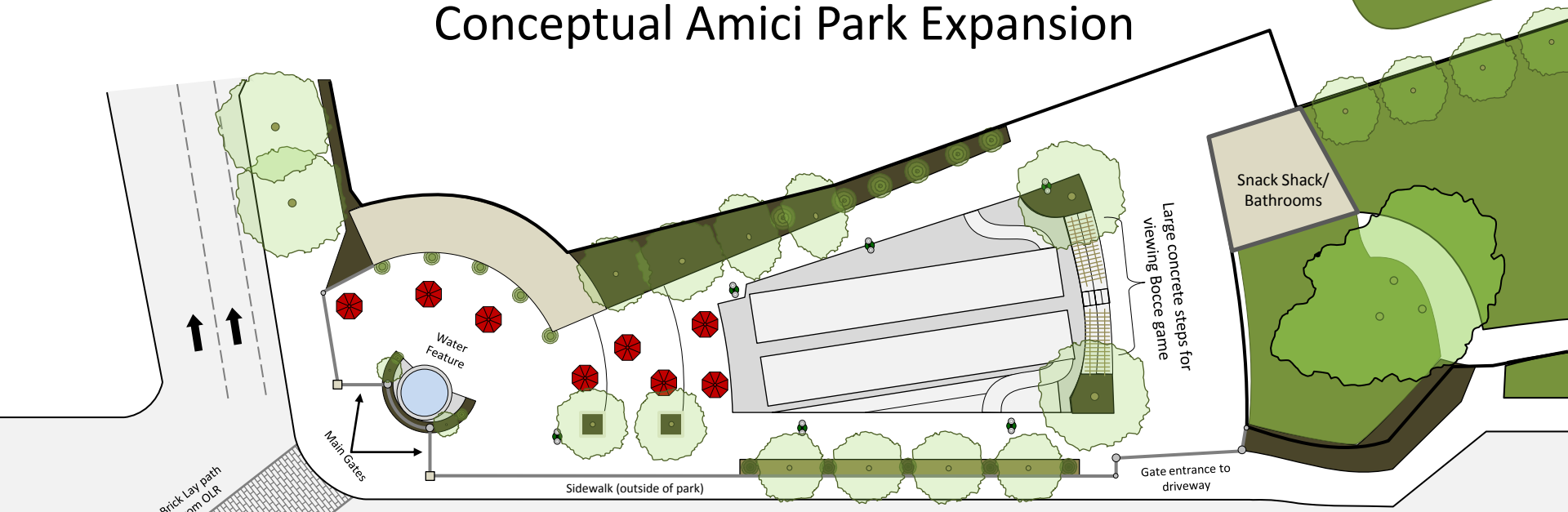


# Amici Park/Existing



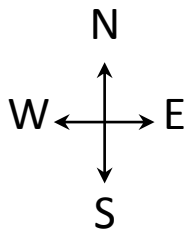
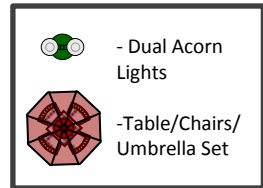
# Conceptual Amici Park Expansion



Date St. →

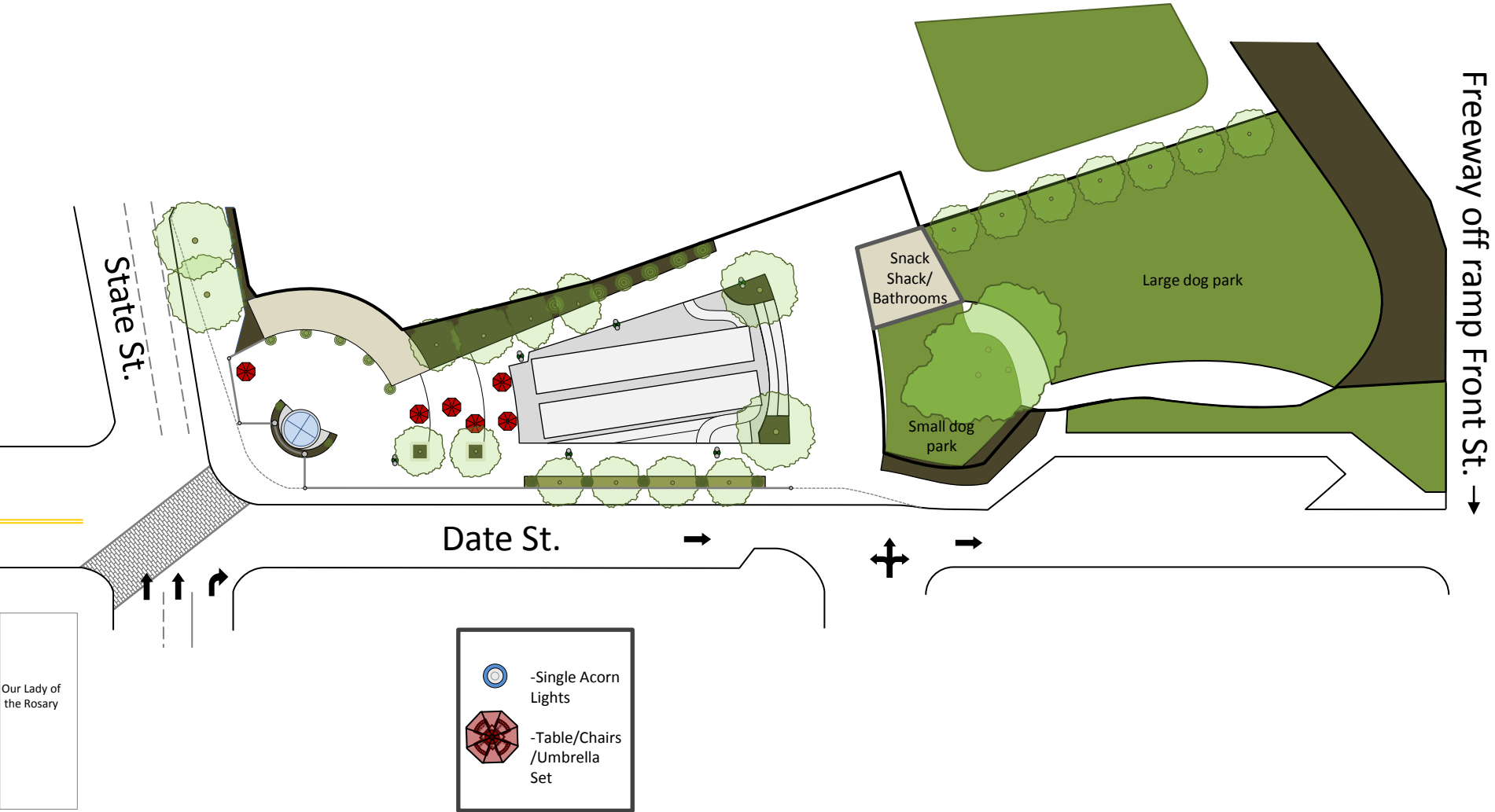
## Features

- Expand park footprint 5 feet into Date St., converting the street from two-way traffic flow to one-way traffic flow heading east, and into existing merging lane on State St.
- Remove most of the concrete tree planters to widen walkway around Bocce courts and plant new trees with fall color and spring bloom into new planter strip running along the new fence on Date St. side.
- Remove row of Italian cypress on east end of the park and construct large sitting steps, shaded by trellises, for viewing of Bocce games. Plant two shade trees on both sides of the steps.
- Add structure at east end for public restrooms and a “snack shack”.
- Replace single acorn lights with high power Dual acorn lights.
- Continue fencing from larger park around park area to close off at night and for special events.
- Add water feature to Amphitheater area.
- Connect Our Lady of the Rosary Church to Amici Park with a diagonal, stone pathway crossing the intersection to dual, grand entrance gates and .



Our Lady of the Rosary

# Amici Park Expansion/ Proposed Dog park



# Little Italy Dog park Proposal

